

# BARCOVISION 508



Boosts Your Business

**BARCO**

# Give Your Customers Front Row Seats



Iran • US Masters Golf • The Grand National

Open • Tour de France • World Cup Football • Wimbledon Tennis

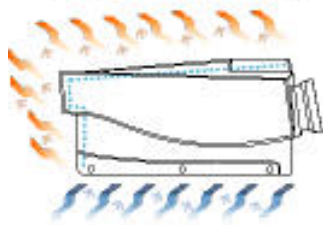
## A Bright Investment

From Sporting Events and Soaps to Rock Concerts, from Cheers to Quiz Shows, the BARCOVISION 508 gives your customers the thrill of large screen, cinema-style projections on screens that are truly larger than life!

For scarcely more than the price of a good sound system, you can install

a complete BARCOVISION 508 system and transform your establishment into the ultimate entertaining center. Brilliant, vibrant images so real they appear to jump off the screen will keep your customers coming back for more. A bright investment in Video projection can give you a brilliant business payback.

# Unmatched Reliability



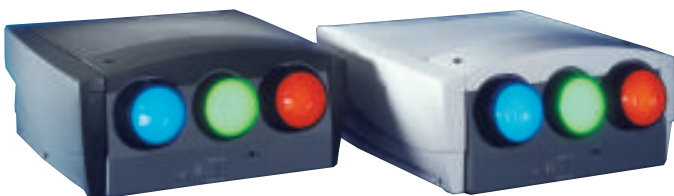
- Highly efficient cooling system: as no fans are required in the BARCOVISION 508, it performs silently without aspirating smoke and dust.
- Auto-diagnose LEDs indicate when maintenance is required and what type of intervention is necessary.
- Superior MTBF (Mean Time Between Failure): greater than 20,000 hours.



World Snooker • Super Ball • Winter Olymp



p • World Title Fight • Olympic



The BARCOVISION 508 comes in a beige or light grey cabinet



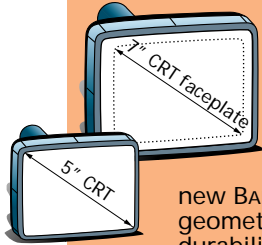
4:3

*Easy switching  
between different  
screen formats*



16:9

# Top Performance

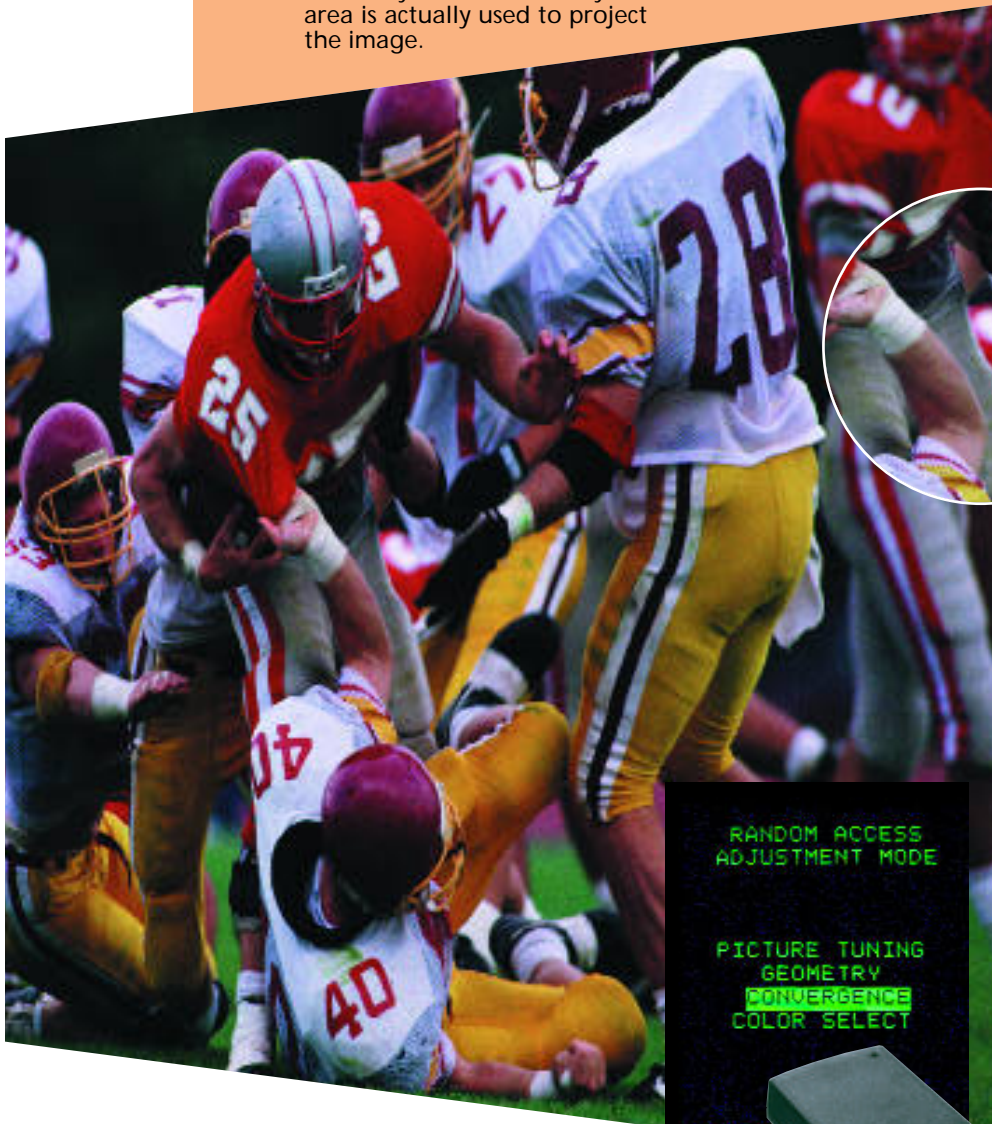
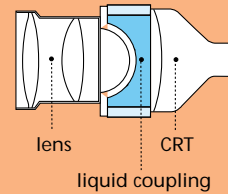


## A Large Picture Tube for Unsurpassed Image Detail

The larger the picture tube, the more detail you see in the image. For this reason BARCO selected high performance 7" CRTs for the new BARCOVISION 508. To optimize picture geometry and sharpness and to extend the durability of the tubes only the 6.4" central area is actually used to project the image.

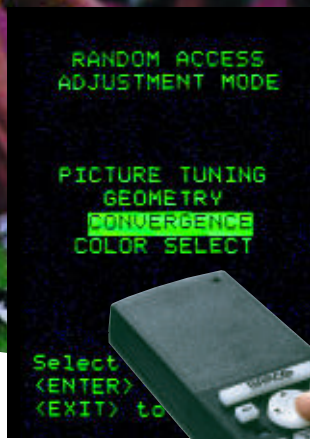
## Optically Coupled Lenses Give Ultimate Contrast

Powerful F1.152 lenses are optically coupled to the picture tube. This liquid coupling is hermetically sealed. This prevents dust and smoke from affecting the CRTs and lenses and ensures perfect functioning of the optics for many years.



## Superior Electronic Design Delivers Unmatched Image Quality

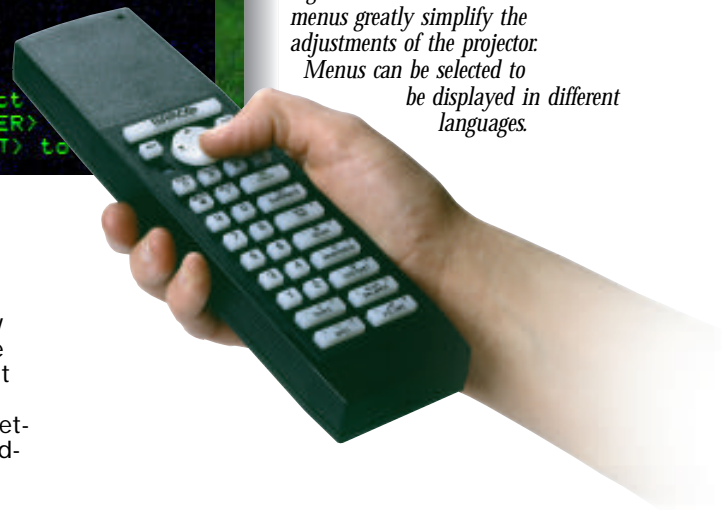
Electronic Correction Circuits continuously monitor the red, green and blue projection CRTs and automatically correct color deviations. Color transient improvement circuitry gives a slight peaking of the color transitions, accentuating the color clarity of the projected image.



*Convenient, well-organized on-screen menus greatly simplify the adjustments of the projector. Menus can be selected to be displayed in different languages.*

# Unsurpassed Ease-of-Use

BARCO's infrared remote control unit is extremely user-friendly and offers complete control over the installation and the use of the projector. Its backlit function is very helpful in darkened rooms. Once set, the projector automatically selects the settings for the source in use, thus consistently providing perfect image quality.



# Designed to attract Brilliant Business



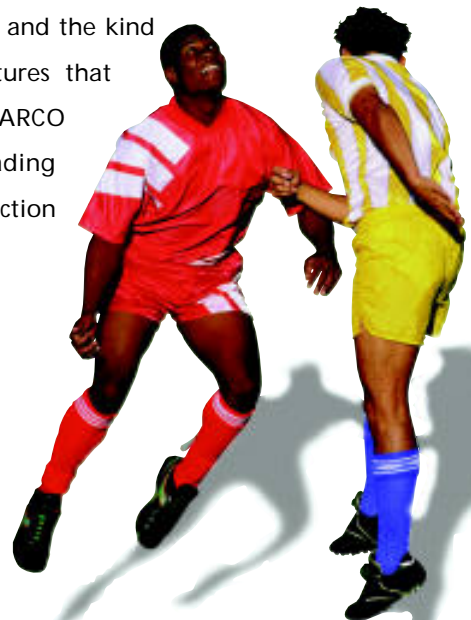
BARCO, a world leader in large screen projection, proudly announces the first video projector made specifically for the entertainment and leisure business. It is designed to give the

sharpest, brightest picture you've ever seen even in bright environments.

## BARCOVISION 508

Forget about "big" screen TV. BARCO's newest projector is so powerful your screen size can be anything from a giant 4.6' x 3.5' to a 'cinema style' 23' x 12.9'. It's even better than being there!

All this, plus the latest ultra-reliable CRT technology, fan-free operation (no swirling dust or smoke), high performance liquid coupled lenses, full digital chassis and the kind of advanced features that have made BARCO the world's leading professional projection company.



**In pubs, (sports) clubs & bars**



**Fashion stores & theme parks**



**Restaurants, small cinemas  
& discotheques**



**Hotel lobbies, musea  
& karaokebars**

# Technical Specifications

## Light Output

AT 10% peak white: 1,100 lumen  
ANSI lumen: 160 lumen

## CRTs

Liquid cooled 7" CRTs (6.4" useful phosphor area)

## Lenses

High-performance, optically coupled F1.152 lenses for high contrast

## Screen Size

- 4:3 aspect ratio  
Min.: 4.6' x 3.5'  
Max.: 23' x 17.3'
- 16:9 aspect ratio  
Min.: 4.6' x 2.6'  
Max.: 23' x 12.9'

## Scan Frequencies

Horizontal: 15.6 kHz  
Vertical: 50-60 Hz autolock

## Minimal Retrace Time

Horizontal: < 11  $\mu$ s  
Vertical: < 1,200  $\mu$ s

## RGB Bandwidth

10 MHz [-3 dB]

## Horizontal Linearity

<  $\pm$  1 % distortion in the full horizontal frequency range

## Optical Resolution

5 lp/mm

## Electromagnetic Interference

The BARCOVISION 508 complies with FCC Rules & Regulations, Part 15 Class B and CE EN55022 Class B.

## AC Power Consumption

250 W

## Safety Regulations

The BARCOVISION 508 complies with UL 1950 and EN 60950.

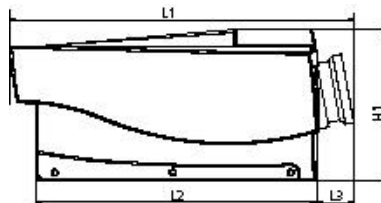
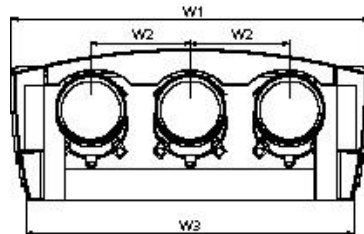


## Inputs

- Video (PAL, SECAM, NTCS 3.58, NTSC 4.43) input on BNC connectors
- 4-pin S-Video (Y/C) input (can also be programmed as second video input)
- RGB or Component video input on BNC connectors, for the connection of professional video recorders (sync or green or separate sync, standard sync or Tri-level sync)

## Weight

Net weight: 70 lbs  
Shipping weight: 108 lbs



## Special Features

- Color temperature adjustment (3200 K, 4900 K, 6500 K, 9300 K or custom)
- Comm 800 port available for connection of peripherals
- Comes with a Ceiling Mount Bracket
- Optional TV tuner and with teletext decoder and stereo decoder
- Optional audio amplifier and monitor speakers

## Order Information

BARCOVISION 508  
230 V R9002130  
VS05 Video/HDTV source selector R9827890  
Executive remote control R9827970

Ceiling mount CM50  
• With pulley system: R9827990  
• Without pulley system: R9827991

| Dimensions | mm  | inch  |
|------------|-----|-------|
| L1         | 630 | 24.80 |
| L2         | 513 | 20.20 |
| L3         | 69  | 2.72  |
| H1         | 278 | 10.95 |
| W1         | 655 | 25.79 |
| W2         | 181 | 7.13  |
| W3         | 601 | 23.66 |

BARCO Projection Systems is an ISO 9001 registered company.  
The information and data given are typical for the equipment described. However any individual item is subject to change without any notice.



BARCO Projection Systems - Head Office  
Noordlaan 5 8520 Kurne, Belgium  
Tel: +32 / 56 / 368 211 Fax: +32 / 56 / 351 651

BARCO, Inc.  
3240 Town Point Drive, Kennesaw, GA 30144  
Tel: (770) 218-3200 Fax: (770) 218-3250  
E-mail: sales.bps@barco.com  
Visit BARCO at the Web: <http://www.barco.com>

